

Edouard Malingue Gallery
馬凌畫廊

Sixth floor, 33 Des Voeux
Road Central, Hong Kong
☐ edouardmalingue.com

Exhibition
'Balance Sheets'
Group exhibition
Curated by Kit Hammonds

Dates
June 4 – July 18 2015

Opening
June 3, 6-8PM

Contact
+852 2810 0317
mail@edouardmalingue.com

Media Enquiries
Jennifer Caroline Ellis
Jennifer@edouardmalingue.com
+852 2810 0319

All Other Enquiries
Lorraine Malingue
Lorraine@edouardmalingue.com
+852 2810 0318

As part of its curatorial projects, Edouard Malingue Gallery is pleased to present 'Balance Sheets', a group exhibition curated by Kit Hammonds. Bringing together works by Duncan Campbell, Lia Forslund & Franek Wardynski, Ximena Garrido-Lecca, Han Ishu, Toril Johannessen, Gabriel Kuri, João Vasco Paiva, Heidi Voet, Hannes Zebedin, the exhibition explores the relationship between art and economics.

"Balance Sheets is an international group show that draws out relationships between ideas of balance in aesthetics, economics and ecological thinking.

Taking its title from accountancy, Balance Sheets takes looks at how we measure value between different fields 'on paper'. In finance the balance sheet has a sort of virtual aesthetics, a 'correct' and stable form of representation where business income and expenditure of resources are presented as equal – even if this includes a surplus or profit. This notion of balance is equally a vital element in formal and traditional artistic composition. Its value has been displaced from visual perfection of the golden section in painting, or the contra-posto in sculpture, and now resides in a conceptual realm – a move that is traced through modernist abstraction, minimalist and conceptual practices. While this history rejects composition in form, there remains a sense of balance between visuality and artistic process and materials.

The artists proposed move between these areas of material production and intellectual or conceptual work. Their works on paper move between the representational value of the materials – paper money, business reports, or charts – to emphasise these process of exchange of values between language and representation – that is working drawings or sculptural work related to the themes. This further reflects on another notion of balance that is in common currency – that of 'precarity'." – Kit Hammonds

Duncan Campbell (b. 1972, Born and lives in Ireland) will present his film work 'Arbeit' (2011). Exhibited within an immersive installation, it holds a mirror to the palsied world economy, in particular the crisis facing the euro. It does this through a biographical account of its ostensible subject, the German economist Hans Tietmeyer, one of the chief technocrats of the monetary union.

Lia Forslund (b. 1984, Sweden) & Franek Wardynski (b. 1989, Poland) are London-based artists whose collaborative work explores dystopian ideas of 'value collapse'. Their collaborative work is a 'critical text machine' that prints on demand a short narrative text based work set in the lead up to the 2007 economic crisis that draws on the jargon of financial industry.

Ximena Garrido-Lecca (b. 1980, Born and Lives in Lima, Peru) creates work that finds symmetries between the forms of conceptual and post-conceptual art with vernacular architectures and hand-crafts found in indigenous Andean cultures. A *Gross of Chullos* is a series of 144 drawings (shown in units of 6 or 12) of traditional hats made from hand coloured photocopies on accountancy paper.

Each is the same but unique (as are the hats themselves) due to the possible number of colour variations.

Han Ishu (b. 1987, China. Lives in Japan) creates drawings, made of coins replacing pixels, related to local economies and political issues. The two works exhibit relate to protests in Fukushima and Taiwan.

Toril Johannessen (b. 1978, Born and Lives in Norway) makes use of analogies between both the scientific and capitalist market interpretation of expansion and abstraction. Through graph plots, such as in her *Expansion in Finance and Physics* series, she shows how these very words are used in various economic, physics and art historical documents.

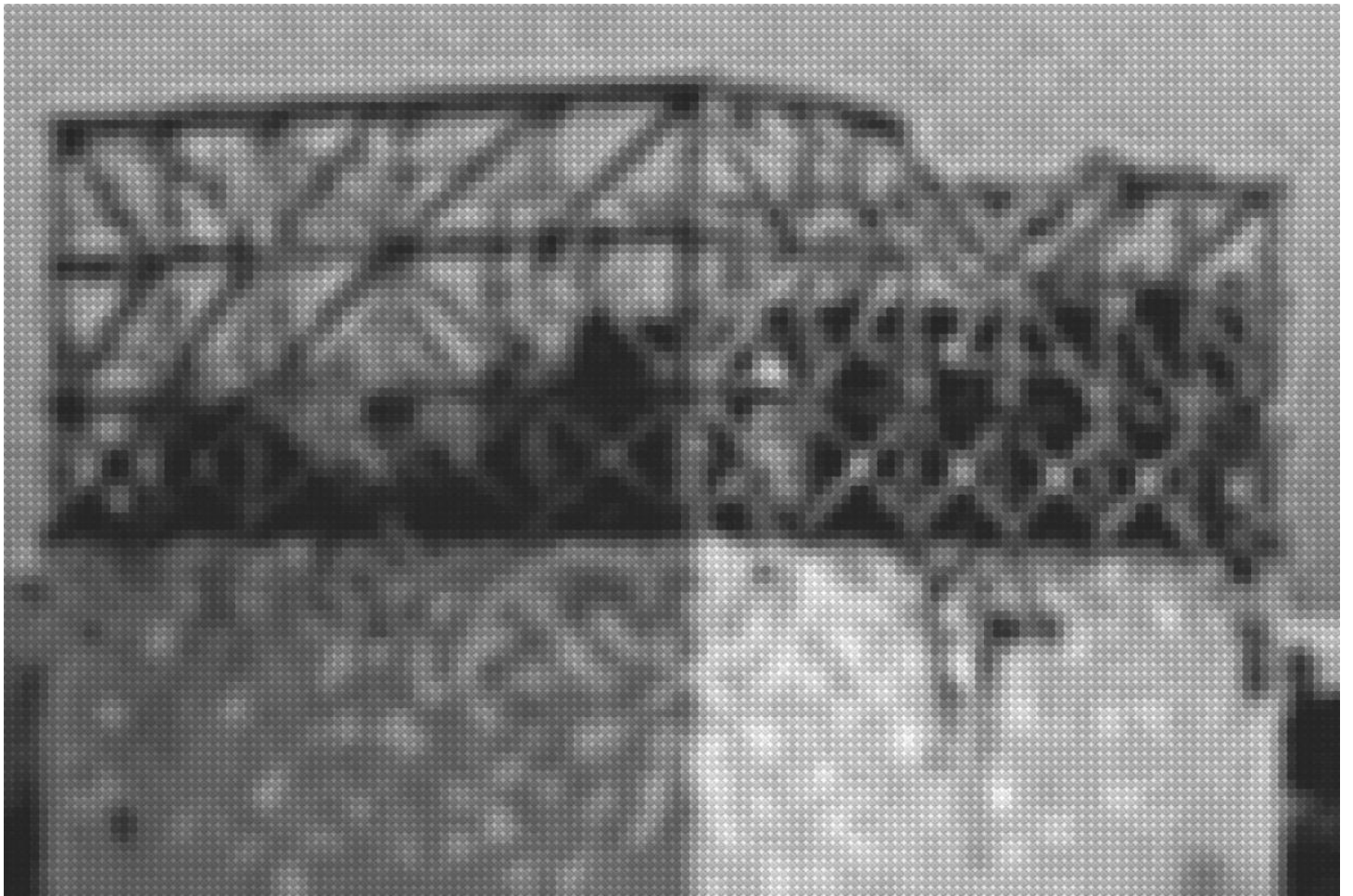
Gabriel Kuri (b. 1970 Mexico. Lives in USA) creates visually refined sculptures, collages, installations, and photographs, working from repurposed natural, industrial, and mass-produced objects. On display will be two '*coin and cigarette butt board*' works, which combine assembled coins and cigarette butts delicately imbricated into sober formal sculptures that play on the codes of minimalism..

Heidi Voet (b. 1972, Belgium, lives between Brussels and Shanghai) looks at the relationship of multitudes presented in anti-formal sculptures and installations. Voet will present *Stars and Constellations*, an installation of coins from various global economic centres – Germany, UK, Hong Kong – that are spread on the floor of the gallery. Among them are 'token' euros commissioned by the artist. These faceless coins represent the dislocation of capital from its location within globalized finance. These tokens tread the line between forgery and reproduction.

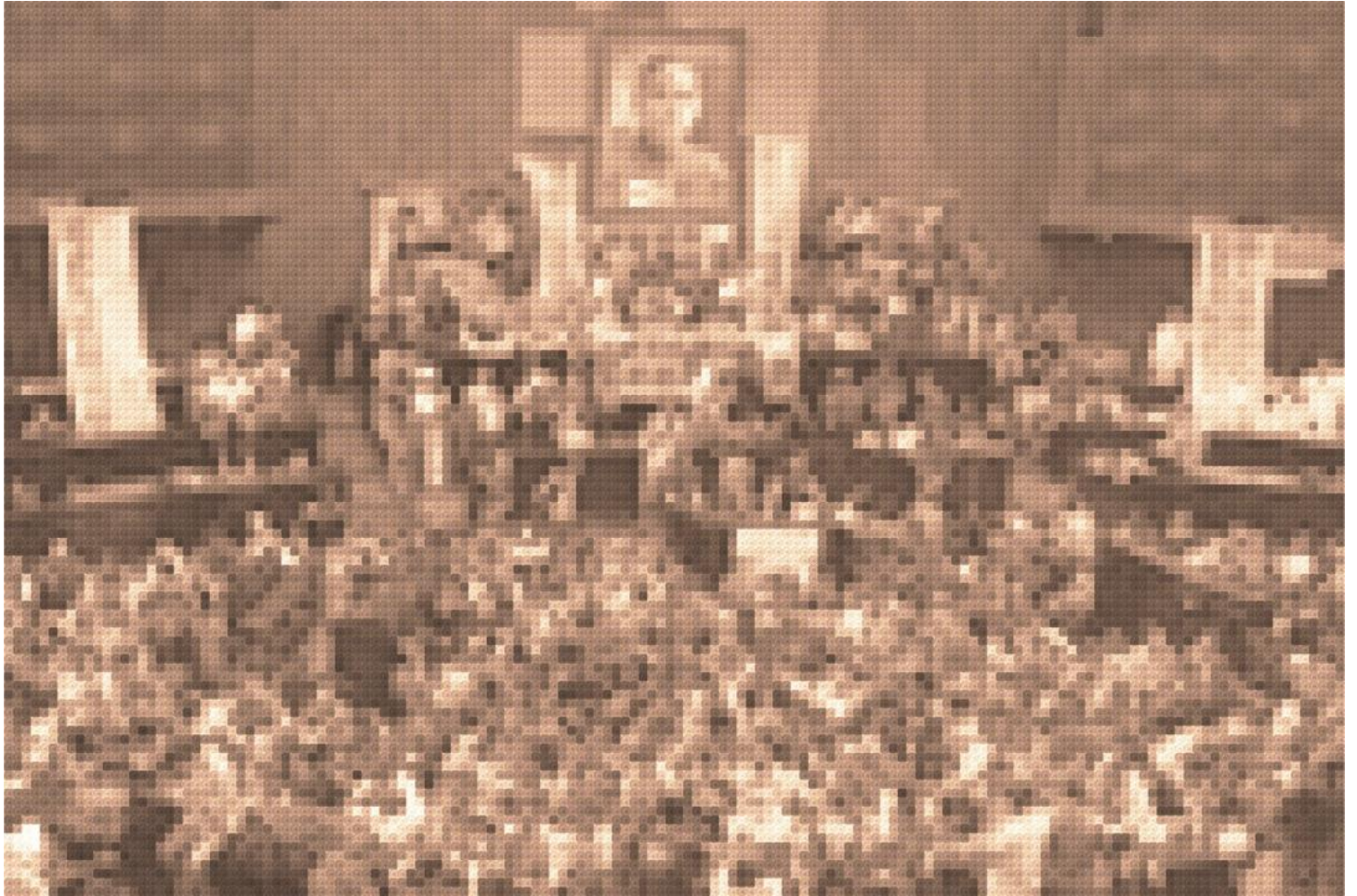
Hannes Zebedin (b. 1976, Austria) uses the forms of conceptual art and protest to make installations and interventions in public space. Zebedin's installation *Zweifelscontinuum* consists of copies of the International Monetary Fund's report on global economics stacked floor to ceiling in the gallery, and allowed to collapse under its own instability. It is combined with an 'energy loss' system, such as an air conditioning system. This reference to natural seasons is a relationship between seasonal change and economics drawn from Karl Marx's theories on capital.

.....

Kit Hammonds (b. 1975, UK, lives London & Taipei) is an independent curator whose practice includes exhibition and event-making, education, as well as critical and creative writing. His recent projects include Co-Curator of the *CAFA Museum Biennale*, Beijing; curator of *Blue Lines, Red Threads*, Serralves Museum, Porto; Co-Founder of Index Art Book Fair, Guadalajara & Mexico City; and Director-in-Residence at the Taipei Contemporary Art Center (all 2014). From 2007-2015 he held the position of Senior Curator in Curating Contemporary Art at the Royal College of Art, London and in 2015 was a recipient of the Taiwan Fellowship, 2015.



Han Ishu
Life Scan Fukushima
2014
Inkjet print
200 x 300 cm

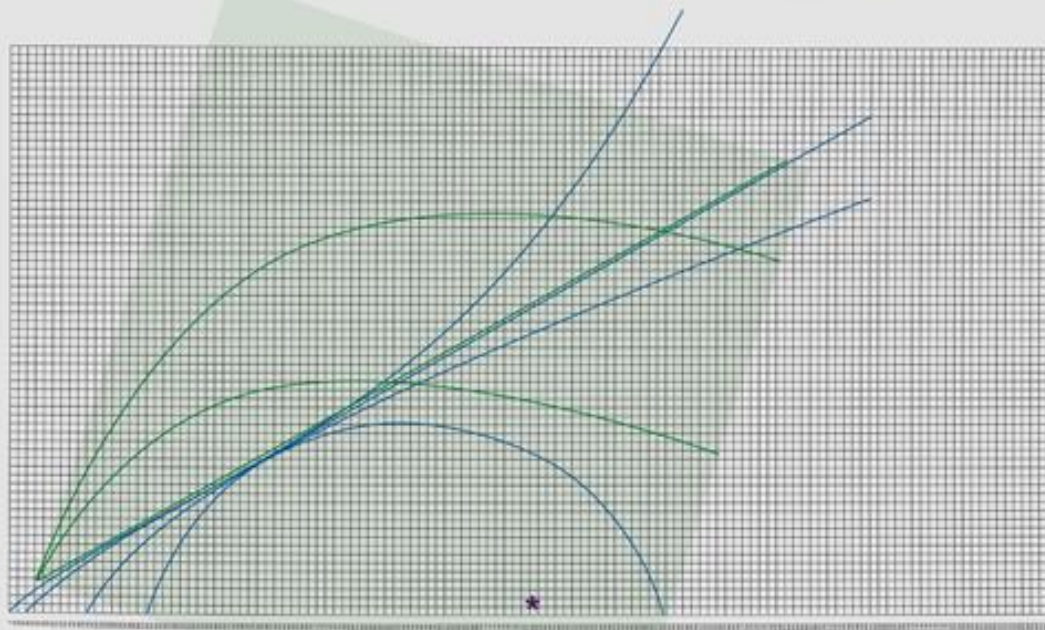


Han Ishu
Life Scan Taiwan
2014
Inkjet print
200 x 300 cm

Abstraction in Finance and Physics

The Solow Growth Model
The expansion of the universe

The discovery of black
holes and the
expansion of the universe



Torill Johannessen

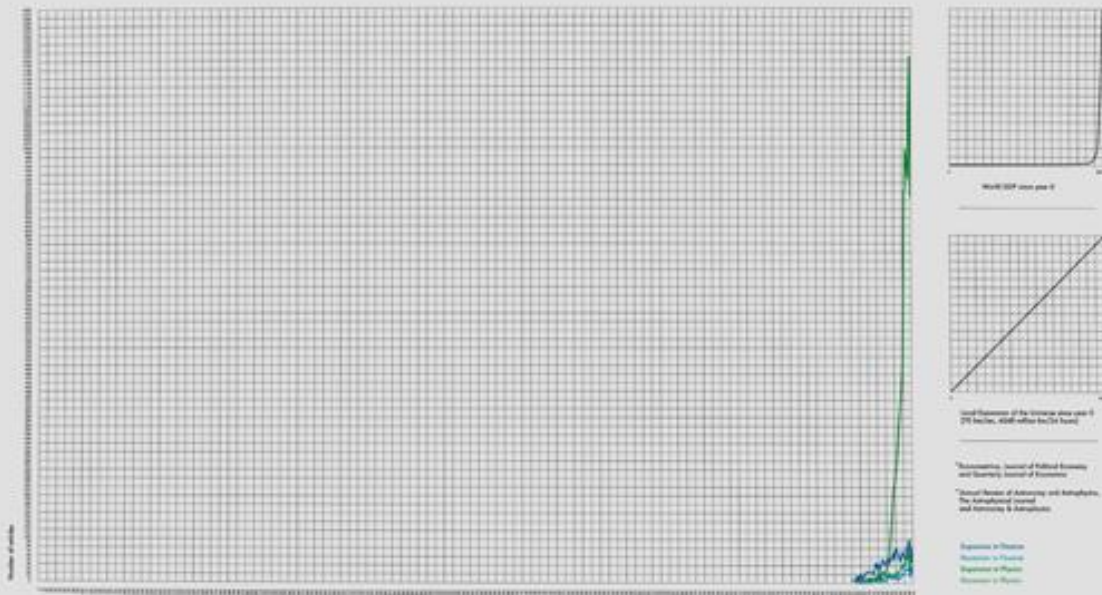
Abstraction in Finance and Physics

2010

Digital print, framed

105 x 145 cm

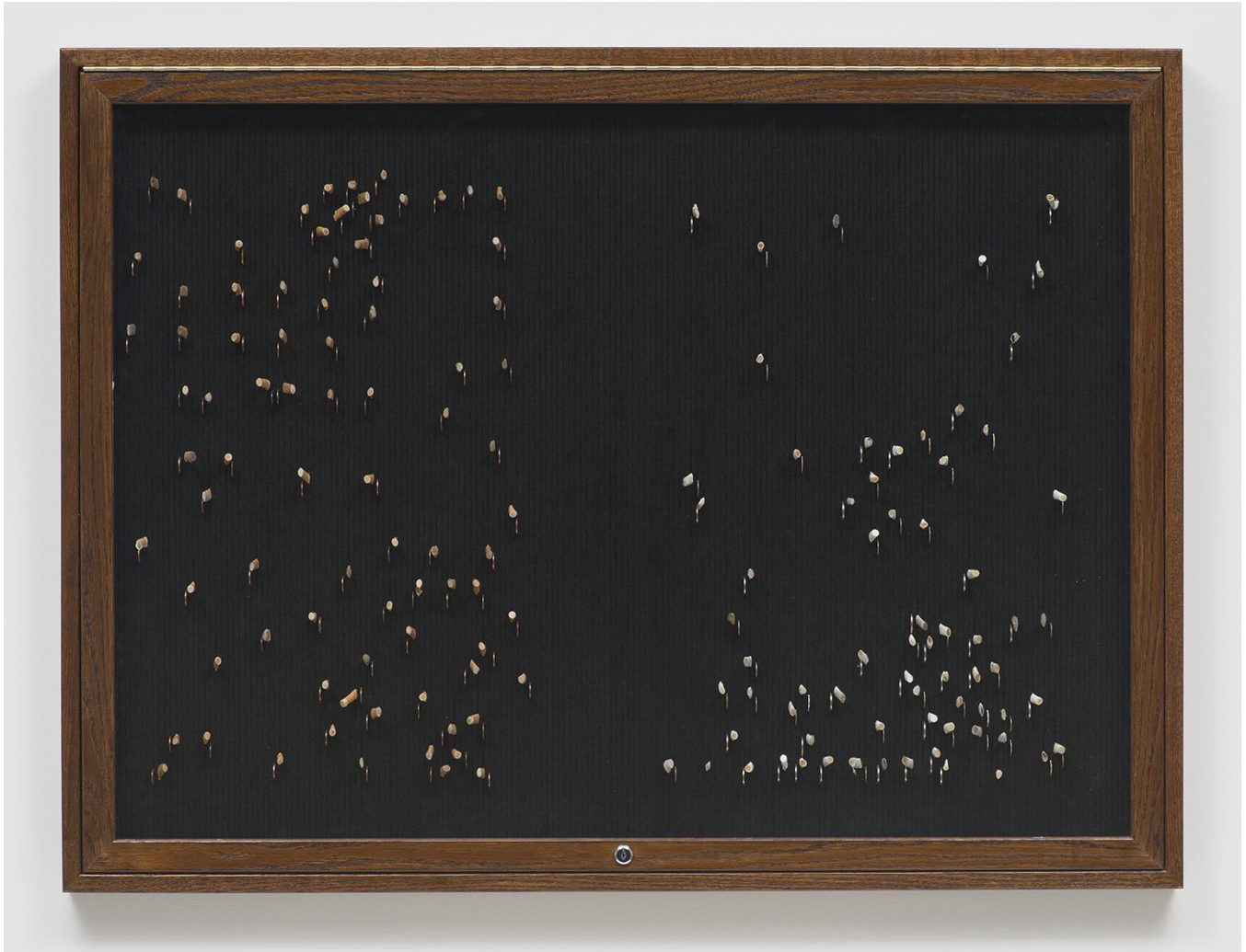
Expansion in Finance and Physics**



Torill Johannessen
Expansion in Finance and Physics
2010
Digital print, framed
105 x 145 cm



Gabriel Kuri
coin and cigarette butt board HSRP01
2014
Letterboard, coins and cigarette butts
24 x 36 x 2 inches
(61 x 91.4 x 5.1 cm)



Gabriel Kuri
coin and cigarette butt board HLRP02
2014
Letterboard, coins and cigarette butts
36 x 48 x 2 inches
(91.4 x 121.9 x 5.1 cm)



Ximena Garrido-Lecca
A Gross of Chullos, 2012 – 2013
 Hand-coloured photocopy on accountancy paper
 Series of 144, each one unique
 42 x 30 cm